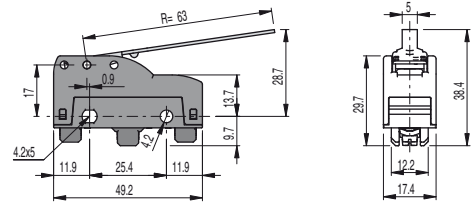
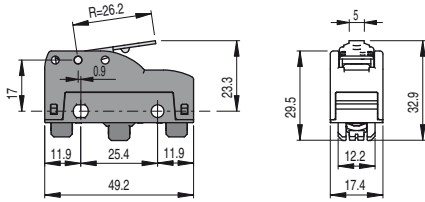


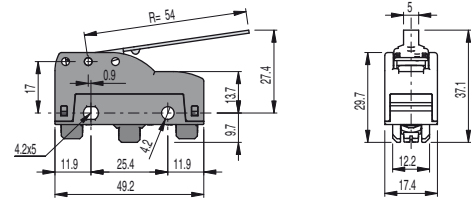
<b>MK V11D19</b> <span style="background-color: #e0f0e0;">1NO+1NC</span>	PC	0,5 mm	FS	4 N
	OC	5,5 mm	FR	3 N .
	CD	0,05 mm	FAP	20 N
	CAP	2,2 mm		
	Maximum and Minimum speed page 245 - type 2			



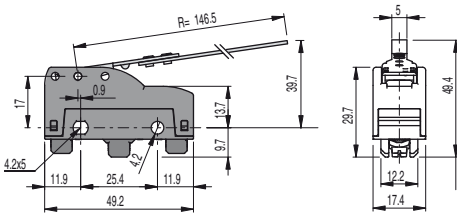
<b>MK V11D30</b> <span style="background-color: #e0f0e0;">1NO+1NC</span>	PC	9 mm	FS	0,65 N
	OC	10 mm	FR	0,5 N
	CD	1,1 mm		
	Maximum and Minimum speed page 245 - type 3			



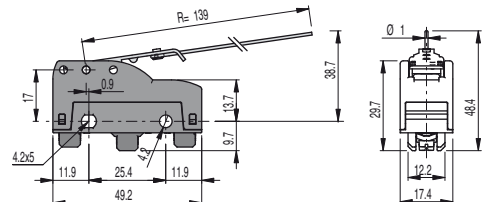
<b>MK V11D31</b> <span style="background-color: #e0f0e0;">1NO+1NC</span>	PC	4,54 mm	FS	1,66 N
	OC	3,86 mm	FR	1,32 N
	CD	0,42 mm		
	Maximum and Minimum speed page 245 - type 3			



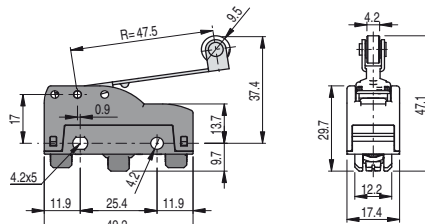
<b>MK V11D32</b> <span style="background-color: #e0f0e0;">1NO+1NC</span>	PC	7,7 mm	FS	0,76 N
	OC	8,3 mm	FR	0,58 N
	CD	0,9 mm		
	Maximum and Minimum speed page 245 - type 3			



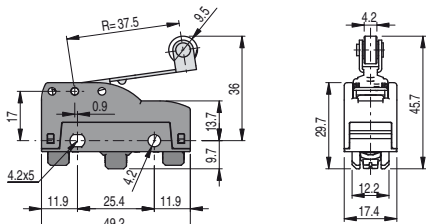
<b>MK V11D35</b> <span style="background-color: #e0f0e0;">1NO+1NC</span>	PC	19 mm	FS	0,28 N
	OC	16,7 mm	FR	0,22 N
	CD	2,5 mm		
	Maximum and Minimum speed page 245 - type 3			



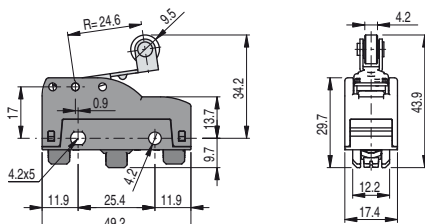
<b>MK V11D37</b> <span style="background-color: #e0f0e0;">1NO+1NC</span>	PC	19 mm	FS	0,08 N
	OC	9,5 mm	FR	0,04 N
	CD	2,3 mm		
	Maximum and Minimum speed page 245 - type 3			



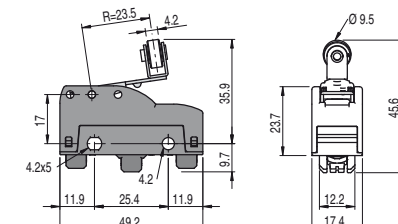
<b>MK V11D40</b> <span style="background-color: #e0f0e0;">1NO+1NC</span>	PC	6,7 mm	FS	0,86 N
	OC	7,8 mm	FR	0,66 N
	CD	0,8 mm		
	Maximum and Minimum speed page 245 - type 6			



<b>MK V11D42</b> <span style="background-color: #e0f0e0;">1NO+1NC</span>	PC	5,3 mm	FS	1,09 N
	OC	5,7 mm	FR	0,84 N
	CD	0,6 mm		
	Maximum and Minimum speed page 245 - type 6			



<b>MK V11D45</b> <span style="background-color: #e0f0e0;">1NO+1NC</span>	PC	3,5 mm	FS	1,66 N
	OC	4,5 mm	FR	1,28 N
	CD	0,4 mm		
	Maximum and Minimum speed page 245 - type 6			



<b>MK V11D46</b> <span style="background-color: #e0f0e0;">1NO+1NC</span>	PC	3,5 mm	FS	1,66 N
	OC	4,5 mm	FR	1,28 N
	CD	0,4 mm		
	Maximum and Minimum speed page 245 - type 6			

Items with code on **green** background are stock items

**Accessories** See page 225